

**PACSESS** NDT

# PACSESS NDT

## Portable DR Systems

*Welcome to the Future of Industrial Radiographic Testing*



- *Highest Image Quality*
- *Unmatched Cost-Efficient Solutions*
- *Ruggedized (IP67)*
- *Light and Portable*
- *Valid for High intensity Sources (X-rays & Gammas)*

# Portable DR Systems

## Highlights



### Cost-efficiency

- Down to 75  $\mu\text{m}$  pixel size
- 6,5 ln/mm spatial resolution
- High intensity sources: X-rays up to 450Kv and all types Gammas sources

→ **HIGH SENSITIVITY**

*Reduction of exposure times and intensity needed up to 10 times!!!*

*"In comparison to traditional film technique"*



### Versatility

- Multiple configurations and accessories available
  - Flight case (customized)
  - Holder
  - Protection case
  - External batteries
  - WIFI Ranger
- WLAN/WIFI connectivity — up to 100m range
- Hot-swap & external batteries — Autonomy up to 20 hours
- Control of X-ray sources and panel with one centralized software



### Reliability

- Long lifetime guaranteed
- Drop test: max. 1'5 meter
- Temperature Stability: -20°C to 50°C
- Load Proof
  - One point (centre): 150kg
  - Total surface: 300kg

## Applications



### Shipyards



### Oil & Gas



### Civil Construction



### Aerospace



### Nuclear



### Casting



### Art & Cultural Heritage

# AcuScreenNDT Pro

## Configurations Available

### Field Package

Including:

- A. Detector
- B. Soft / Hard Protection Case
- C. 50 m cable
- D. Ruggedized high-performance tablet
- E. AcuScreenNDT Pro License
- F. Ropes & Fixators / Magnets

### Bunker Package

Including:

- G. Detector
- H. Soft / Hard Protection Case
- I. Wired / Wireless Control Unit
- J. AcuScreenNDT Pro License
- K. Ropes & Fixators / Magnets

### Customized packages

Including:

- A. Field and/or Bunker Package
- B. customized cases
  - e.g.: with built-in PC and 4K monitor
- C. Automated inspection options
  - Automated/controllable movable/rotating detector with automated image acquisition

### Accessories

- A. External batterie set
- B. Non-vibrating tripod
- C. Special holders
- D. Software integration of different x-ray sources

### Full connectivity to AcuScreen Enterprise Platform with integration of:

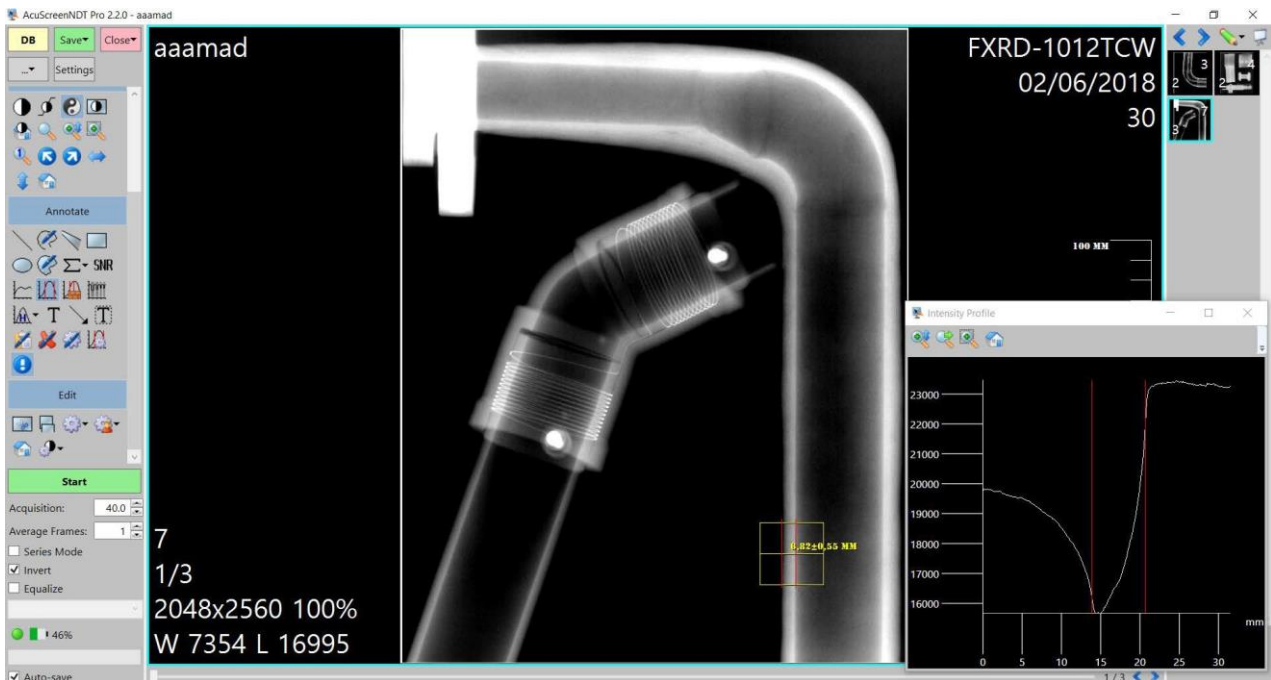
- E. Order data from ERP
- F. Material certificates,
- G. Welding data,
- H. Camera feature
- I. Photo measurement
- J. function





# AcuScreenNDT Pro

Once again, **PACSESS NDT** has come up with an impressive adaptation for **DDA** usage of our specific x-ray software. While keeping the most intuitive and user-friendly interface, we have included cutting-edge image processing tools that will bring your quality inspection skills to the next level.



## Features

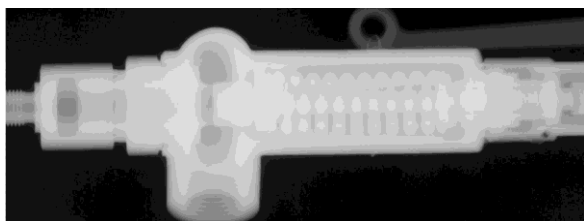
- **DATABASE MANAGER**
  - 100% DICOM Compliant
  - Search function by key words
  - Import / Export (JPG, TIFF & DICOM)
  - Report Management System Integrated
  - Auto-feed tool from image measurements
  - Local Server
- **ADVANCED IMAGE PROCESSING TOOLS**
  - Intensity Adjustment
  - Dynamic Auto B/C
  - Contrast adjustment based on LUT
  - Inversion
  - Filters
    - Reduction of Noise
    - Sharpen
    - Contrast Enhancement
- **MEASUREMENTS AND ANNOTATIONS**
  - Dynamic wall thickness
  - Intensity profiles
  - Detect & Measure
  - Signal-to-Noise Ratio
  - Statistic Values & Histograms
- **SPATIAL TRANSFORMATIONS**
  - Zooming (automatic/manual)
  - Loupe
  - 1:1 Feature
  - Rotation / flipping
- **PRESETS**
  - Brightness / Contrast
  - Filter Functions



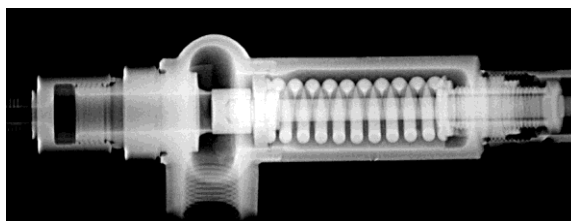
All future updates  
free of charge



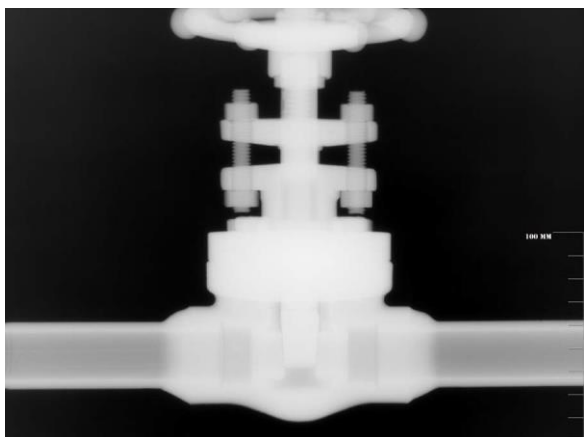
# AcuScreenNDT Pro



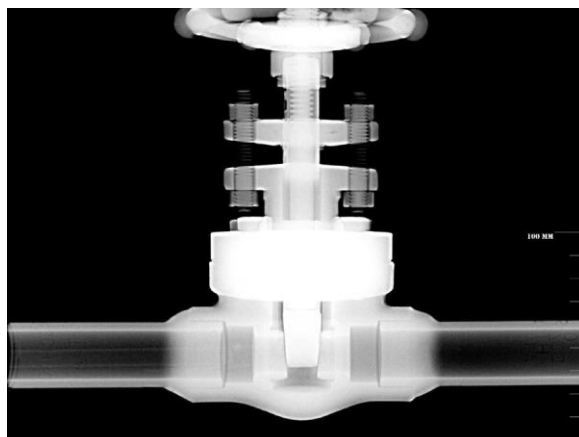
Before



After



Before



After

The screenshot displays the software interface with several key components:

- Left Panel (Tools):** Includes buttons for 'DB', 'Save', 'Close', and 'Setting'. Below are sections for 'General' (with icons for zoom, pan, etc.), 'Adjust' (with icons for contrast, brightness, etc.), and 'Annotate' (with icons for lines, circles, etc.). A 'Start' button is at the bottom of this panel.
- Main View:** Shows an X-ray image of a pipe with a yellow rectangular measurement box. The measurement value is  $61.484 \pm 0.007$  mm. Other data points shown are '8', '3032x2264 144%', and 'W 13626 L 9479'.
- Intensity Profile:** A graph showing intensity (y-axis, 4000 to 16000) versus distance (x-axis, 0 to 30). It features a large bell-shaped curve and two sharp vertical peaks.
- Right Panel (Metadata):** Displays component information: 'M1824C', '05/2018', '27', and 'pe13mm'.
- Bottom Panel (Database):** A table for component history with columns for Component Name, Component ID, Owner, Description, Status, Date, Size, Study ID, and Inspector. The table contains several rows of data.




Detect & Measure

DICONDE Database

## Technical Specifications

***We are experts in customizations.  
If you have a specific application for your digital x-ray inspections that is not included in the Tech Specs mentioned below. Let us know and we will supply your desired model!***

### Options

MODEL NAME	OPTIMA 1723	MAXIMA 2532	MAXIMA 3643
PRODUCT APPEARANCE			
TECHNOLOGY	TFT with photodiode		
SCINTILLATOR	CsI or Gadox		
PIXEL PITCH	75 µm	124 µm	140 µm
PIXELS	2304 x 3072 pixels	2048 x 2560 pixels	2560 x 3072 pixels
IMAGE SIZE	172.8mm x 230.4mm	253.95mm x 317.44mm	358.4mm x 430.08mm
GRayscale	16 bits		
ENERGY RANGE	40 - 450 kVp		
MAX. EXPOSURE TIME	300 sec		
X-RAY GENERATOR INTERFACE	Automatic Exposure Detection / External Line trigger		
DATA INTERFACE	Wired: Gigabit Ethernet (1000BASE-T) via PoE (Power over Ethernet) Wireless: IEEE802.11n/ac (2.4GHz, 5GHz)		
IMAGE ACQUISITION TIME	Wired: 1.5 sec / Wireless: 3 sec		
DIMENSIONS	195.8mm x 264.4mm x 35.0mm	322mm x 355mm x 17mm	390mm x 470mm x 17mm
WEIGHT	Light: 2.0 kg / Basic: 2.4 kg	Light: 2.5 kg / Basic: 3.1 kg	Light: 3.5 kg / Basic: 4.5 kg
OPERATING ENVIRONMENT	-20°C to +50°C		
OPERATING TIME	8 hours in operation, 9 hours in standby		
POWER	DC24V, Max. 0.8A	DC24V, Max. 0.8A	DC24V, Max. 1A